



PHOTO BY DAVE LITTLE

# THEY'RE NOT ON THE TRAIL MAP

By Steve Motta

I'm going to hate myself for writing this.

Back in my day, some of the best runs at Castle didn't appear on the trail map. In the north, Beaver Mines (now Last 100 Turns), Wammy, Powder Horns and Funk's Bowl were pretty much locals only. And in the south, Full House was ALL OURS for years. Those days were magic.

These days, the unmarked pickings are a whole lot slimmer and shorter but some still exist. Here are a few of my favourites:

**The Gun Site** - This run is sandwiched in-between Shotgun North (SGN) and Shotgun South (SGS) and it ultimately drops into one or the other. It is surprisingly long, lightly treed, always soft and has few riders over age 14. For best effect, ski the Shotgun Slam (SGN, SGS and the Gun Site) back to back before the Red chair opens on a powder day. So much fun, while the sheep stand in the Red lift line.

**Fist-Full-of-Turns (FFOT)** - This run is a wide, loopy open glade below 9 to 5 down to the base of Whisky Jack. It has rolls, gullies and bumps taller than an 8 year old. On a cold day, nothing warms the body like an Enchanted Forest, 9 to 5, FFOT combo. Listen to your inner child (not your cardiologist) and give FFOT a try. Then go home, eat a pizza pop and chug a chocolate milk. Kids rule!

**Tam-show Trees** - Visible to all, ridden by few, long and always great snow. It is located between Tamarack and Showboat. Driving into Castle in July it is not uncommon to see the very last patch of snow at Castle in Tam-show. South winds load-up Tam-show like nowhere else at Castle. It is steep and nicely gladed. It's great for showing off or rag-dolling in front of a fully loaded red chair. I've done both.

**Betty** - Never identified or named on the trail map in our 25 years at

## CALENDAR OF EVENTS

### FEBRUARY

Torchlight Parade 24

### MARCH

Slopestyle Competition 1-3

Alpenland Demo Day 2

Tom Tataryn World's Longest Slalom 9

Fistful of Turns Banked Slalom 15

Beats in the Base Spring Concert Series 16-17

23-24

30-31

### APRIL

Beats in the Base Spring Concert Series 6-7

Tentative Closing Day 7

## RECURRING EVENTS

at the T-Bar Pub through ski season

Live Music every Friday

Open Mic Night every other Saturday

Trivia Night alternating with Musical Bingo on Sundays

Theme Night Wednesday nights once a month

— Continued from Page 1

Castle, our family named it Betty (for confidential reasons). It is located in-between Upper Sundown and Upper SunUp, but is inaccessible from Easy Street. After a Burn or Trapper run, bop down the Upper Sundown pitch and turn hard left. Betty is generally 6-8 lovely untracked turns before dropping onto Lower Sun-

down. Good soft fun. Thanks Betty. **Rogers' Return** - What if your day at Castle could end with 6-8 beautiful powder turns down an untouched intermediate pitch at 4 PM? Mine often does. Roger's Return starts beside the snow-making pump house and ends at (you guessed it) Pat Roger's cabin. Mid-week, I lay down one

set of tracks at lunch then powder 8 them at the end of the day. Pro-tip: enter at full speed and powder eight around the power poles, just because. In the spring, stopping at Pat's for hydration (beer) makes the turns even sweeter.

There are more, but hey, I've already said too much.

## SEVERE DROUGHT CONDITIONS PUT PRESSURE ON GOVERNMENT TO ACT AND COMMUNITIES TO TAKE FIRESMART ACTION

By Glenn and Carolyn Armstrong

Unfortunately, last Summer and Fall's wildfire season never really ended. According to news sources, there are currently over 50 wildfires burning in Alberta and over 90 in B.C.

With Alberta continuing to experience severe drought conditions, Fire Chiefs across the province, concerned with the upcoming fire season, have asked the government to share its plans for fighting wildfires\*. This is good news for us here at Castle, by placing a spotlight on the need for vegetation management around interface

communities like ours. Hopefully it will help us move forward by approving our grant applications for FireSmarting. Our FireSmart Focus Group continues to diligently apply for grants and connect with different government agencies and consultants. We have made valuable allies in our efforts to protect our community and ski hill from a potential wildfire event.

But we need your help, too! Please mark FireSmart Day, June 15th, 2024 on your calendars and come support Castle Mountain Resort Community - no expertise is needed.

FYI: What does FireSmart Day entail?

1. Thinning of trees to reduce potential wildfire intensity
2. Pruning tree branches within 2 meters of the ground
3. Removing excessive brush and combustible materials
4. Moving debris piles to a designated burn site



PHOTO BY C. ARMSTRONG - Primed to burn! Area immediately south of Castle Community

Note: on the FireSmart Day, lot owners wishing to work on their own property will have access to equipment to help haul their debris piles to the burn site.

This year's focus is on FireSmarting tree islands within the Resort Community.

Hope to see you on Castle's FireSmart Day.

\*Alberta fire chiefs call for provincial strategy as wildfire season looms

[www.shorturl.at/brKR4](http://www.shorturl.at/brKR4)

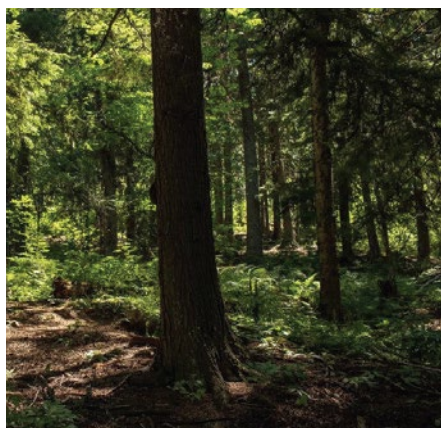


PHOTO BY C. ARMSTRONG - FireSmarted, healthy forests allow in light and moisture





SATURDAY JUNE 22 | 1:00PM SHOTGUN START

## CMCA GOLF CLASSIC

Register early to ensure your spot. Firesmart Fundraiser for CMCA.  
FOR MORE INFO: [www.cmca golf classic.com](http://www.cmca golf classic.com)

FOR SPONSOR INFO CONTACT:  
Dave Clement 403 831 2037  
dclement876@gmail.com

📍 Waterton Lakes Golf Course

## CMCA PRESIDENT'S REPORT

By Tim Luke, President, Castle Mountain Community Association

Welcome to our favorite time of year at Castle. The snow is getting deeper, thanks to the efforts of the CMR snowmaking crew and Ullr for showing up just in time to make our spring season come alive. The spring schedule is packed with fun events for the whole family - look for the CMCA crew handing out Hot Chocolate, Marshmallows and Stickers.

Your CMCA Board of Directors has been busy this season, we made a presentation to the MD of Pincher Creek that was well received by

council and staff. We even made it into Shootin' the Breeze, with a nice article to follow up the event. The key message was that Castle is open for the broader community to come out and enjoy in all seasons. We also met with our MLA Chelsae Petrovic, to discuss our Firesmart efforts and bring her up to speed on our community.

The team has an action packed June coming with Firesmart Day and Trail Day happening on June 15 and 16, followed by our inaugural CMCA Golf Classic in support

of Firesmart on June 22nd. All great events to bring your family and friends out to.

I want to thank all the volunteers that make our community so vibrant. If you know of someone that goes above and beyond to show their "Castle Spirit" please let me know. If you are interested in joining the CMCA Board or have some time to volunteer, please reach out to me.

See you on the slopes,

Tim

## CMR UPDATE RIDING THE WEATHER ROLLERCOASTER

By Dean Parkinson, General Manager, Castle Mountain Resort (CMR)

Winter can be fickle, and this year is no different as this Super El Nino alternates weather periods of cold, warmth, clear snow, and below average snowfall. Castle is using all the tools at our disposal to mitigate these difficult patterns, ranging from hauling snow around with toboggans, pulling snow from (wind) loaded features, and snowmaking. This season has been akin to riding a weather rollercoaster – up, down, and all around! The trails we have open are providing for some good skiing and riding, and those that aren't open are being monitored closely

with the goal to opening up more terrain. Other than a couple of extreme cold days, we have been open daily since December 1, and are sure to remain so until our closing day.

As of the time of writing, we have resumed making snow in key areas, bolstering conditions heading into the busy and pivotal Family Day Weekend / Family Week. While making snow into mid-February isn't the norm, we know of other resorts who are extending their snowmaking season to offset the vagaries of nature providing guests with the

best possible experience we can. Only five years ago, Castle snowmaking consisted of one single snow gun, hooked up to a fire hydrant in the base area. Our snowmaking capacity has grown considerably, proving to be a season saver especially for the lower third of the mountain.

All team members, across all departments, have remained optimistic while putting in an amazing effort this season to combat nature's rollercoaster.

We are looking forward to a great back half of the season and thank you for your continued support.

# HIGH 5! CONSERVING ENDANGERED WHITEBARK PINE AT CMR AND AROUND ALBERTA

By Jodie Krakowski



PHOTO BY JODIE KRAKOWSKI - Clark's Nutcracker

## The Bird Pine

Whitebark pines are sentinels guarding the fragile treeline, sometimes living over 1000 years. These slow-growing, five needle, keystone trees take 50 to 80 years to start producing cones and only produce cones every 3 to 5 years.

Did you know: every natural whitebark pine was planted by its best friend, Clark's nutcracker? Over countless generations, these grey, black and white jays and the trees have co-evolved: the cones cannot open on their own and rely on nutcrackers to peck the large nutritious seeds out. Nutcrackers then cache about 100,000 seeds a year for high-calorie food later. Seeds forgotten in a good spot grow into trees. Years when cone production is low, nutcrackers don't have enough food and therefore enough energy to reproduce. They need each other!

## What's up with Whitebark pine?

Whitebark pines are endangered in Canada. An introduced fatal

disease, white pine blister rust, is the main culprit, infecting a devastating 90-100% near Castle Mountain. Between mountain pine beetle, blister rust, and fire suppression changing ecosystems, whitebark pines in southwest Alberta are in poor condition.



PHOTO BY JODIE KRAKOWSKI - Active blister rust fatally infecting a sapling.

Partners from B.C., Alberta and the USA are working hard to save and restore these ecologically important trees in their natural habitat, incorporating the latest science and traditional knowledge. The heart of recovery is trees that are naturally disease resistant. We collect their seeds and, from them grow disease resistant seedlings in a nursery and then plant them around the mountains. Also, branch cuttings from naturally resistant trees are sometimes grafted onto other younger trees in an irrigated tree orchard,

like the one in Waterton Park. These trees will then produce cones, pollen and seeds in a few years rather than having to wait 50 or more years for seed collection.

We need to think long-term and keep growing together.

Love trees? Hike up Gravenstafel Ridge, look around the top of T-rex T-bar, or search the top of Tamarack Chair for these remarkable 5 needle pine trees. Perhaps you already know the beautiful Broccoli Tree in the cat ski area.

## Ski hills and Whitebarks - a perfect combo

The Whitebark Pine Ecosystem Foundation offers whitebark-friendly ski hill certification which Castle Mountain is presently pursuing, supporting management, restoration, and research:

[whitebarkfound.org/our-work/ski-area-certification/](http://whitebarkfound.org/our-work/ski-area-certification/).

Our neighbours Whitefish, Montana and Panorama, B.C. are among the several North American ski areas that are showing their interest in preserving our environment by being certified.

Remember: If you see a pine with needles in bunches of 5, keep it alive!

We'd love to connect with you!

Whitebark Pine Ecosystem Foundation of Canada.

<https://whitebarkpine.ca>

# MARIE CAMERON AKA HUGGIE MARIE

By Nancy Tynan



PHOTO FROM MARIE CAMERON

The first time I met Marie was way back in time but still in recent history. With a big smile and grappling with an awkward paper leger clutched in her hands, she checked our passes. It was tricky to get a hug in but she managed anyway. A pass scanner was eventually acquired that worked marginally better, and the hugs prevailed.

Marie was born in Pincher Creek and first skied Westcastle in 1968. She met Wendy Ryan (Lift Operator Manager) at the Lethbridge Community College where they studied recreation and have been best pals ever since. Life has been busy with her marriage to Jim, 3 kids: Scott (Raymond, Ab.), Michael (Victoria, B.C.), and

Jenny (Courtney, B.C.), a work life that moved them around Southern Alberta, their fertilizer company, Jim's 1948 Cessna 170, and an aviation fuel business. Phew! Not to mention extensive volunteering for Care Bears and working the lift line at Castle. They have a cabin at Beauvais Lake that has been in the family since 1950. Here they can be seen touring the lake in high style on their electric motorized dock, in a Cameron version of the party pontoon boat.

"So why the hugs?" I asked her. "Well," she said, "it started with friends but then strangers and acquaintances got a wee bit jealous so I thought, what the heck, come on over here big fella!". So now we have equal opportunity hugging. Some patrons are not amused by the little dynamo coming into their personal space and she's all Zen about that too. This could very well be a ruse to perfect her pick-pocketing skills and thereby augment her hourly wage...all while singing a tune. Might distraction be her M.O.? Nah... She's way too good a person!

## YES YOU CAN



Attend the free Yoga class on Sundays at 6pm in the Day Lodge



Sponsor or donate a prize to our upcoming Golf Tournament June 22nd



Buy a one time Huck lift pass for your guests to enjoy the views



Pick up your dog waste... plus one



Share your musical talents at Open Mic, every other Saturday



Share books with your neighbours at the Little Free Library on the deck of Alpenland

## FOR MORE CLUB INFORMATION SEE BELOW

### WESTCASTLE RACE CLUB

www.westcastle.org  
President: Liesel Leishman  
liesl@westcastle.org

### CASTLE FREESTYLE SKI CLUB

www.castlefreestyle.ca  
President: John Power  
jpow333@gmail.com

### CASTLE SNOWBOARD CLUB

President: Mariko Belle  
castlesnowboardclub@gmail.com



# "MAY THE LIFTS BE WITH YOU" OR BLOOD, SWEAT AND GEARS

By Gerry de Leeuw

CMR's unique ability at buying and installing lifts, and creating new terrain, inexpensively can be attributed to the passionate and rugged determination of a few key individuals, and to the unwavering support of the skiing community. The chronological installation order of CMR's lifts and terrain is listed below:

1964/65 - Three new Mueller T-bar lifts were installed at the base of Gravenstafel opening up the bottom half of our mountain. Sixty years later, the original T-bar #3, T-Rex, is still in operation.

1967 - T-bar #4 was installed in the alpine (Bandito) opening the top half of Gravenstafel from Outlaw to the far north, enhancing the skiing dramatically.

1969 - Due to financial issues,

T-bar #4 was removed and sold to Mount Baldy, Oliver, B.C. for \$10,000. This closed the alpine terrain.

1995 - Barney Handle tow was erected at the base of Haig to create a beginner area.

1996/97 - The Sundance (Blue) chair was purchased from Superior Tramway in Spokane. It was a 1960's double Riblet chair originally from Mount Hood in Oregon. The triple chairs were purchased separately.

1998/99 - Sunshine Village's Great Divide chair was installed as our Tamarack (Red) chair. Once again, this transformed skiing at Castle, opening up the entire top half of the mountain from the far Chutes to the far North, providing some of the longest continuous

fall-line runs in North America.

2002 - T-bar #2 was replaced by the Green chair which was Sunshine Village's 20 year old Wheel-er Chair. 30 new chairs had to be purchased and the base area was re-contoured to accommodate beginner skiers.

2006/07- The Huckleberry (Purple) chair was purchased from Beaver Creek, Colorado. This opened up the Haig Mtn intermediate terrain and facilitated the Cat skiing operation to commence on upper Haig.

2024 - The process of purchasing the Angel Express high speed quad from Sunshine Village is underway. Details TBA.



**PINCHER CREEK**  
*Meats*

---

Monday - Friday 8-5  
403-627-3655

---

1079 DEER AVE



MAIN CO-OP

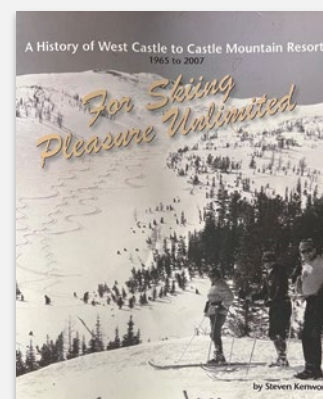
FAS GAS

WATERTON AVE

YOUR LOCAL BUTCHER  
FEATURING:

- Certified AAA Angus Beef from Cudlobe Angus West in Stavelly
- Northern Gold Aged 28 days Angus Steaks
- Pincher Colony Pork Products
- Grannies Chicken Products
- Bles-Wold A2 Pure Dairy Products

## BOOK FOR SALE History of Westcastle



**\$29.95 plus GST**

Purchase at Guest Services  
Limited number of copies  
available

## MD UPDATE

By Dave Cox, Reeve, MD of Pincher Creek

The water issue continues to be a major concern in the MD. We have made progress in reducing the amount of water being trucked in but there is still some trucking of potable water as needed. The temporary pumping system is in operation and is supplying the majority of the water needed. Turbidity has been an issue, but the contractor supplying this pumping system has managed to overcome this problem most of the time. The application process to allow us to drill wells into the aquifer within the dam's footprint

is underway, and hopefully we'll have the approvals soon.

The drought issue is another concern. The province is in negotiation with the major water license holders regarding water sharing agreements (the MD is not considered a major water license holder). This means water restrictions will most likely remain in place for the foreseeable future.

CMCA made their presentation to the MD council in January and it was well received.

The MD met with the tourism minister, Joseph Schow, and his staff. The discussion from their point of view focussed on how tourism can be expanded. The MD's point of view focussed on how to get provincial support for infrastructure needed to address tourism use. All in all, it was a good meeting.

Fire-smart planning and grant applications are underway in collaboration with the province (FRIAA), Pincher Creek Emergency Services Commission, CMR and CMCA.

## UPSCALE CAMPING: GLAMPING RESORTS

By Melissa Zoller



PHOTO BY SIG ZOLLER

Beaver Mines Lake provides four-season adventure. Why? Just this past summer, visitors from the United States, Calgary and points further north joined locals for a unique fishing experience while the Canadian Armed Forces ran rescue drills right over the lake. A relaxing day on the water

got very exciting with that helicopter coming almost within arms' reach and a Hercules higher overhead. The wind and water whipped into a frenzy but the fish were still biting so everyone ended the day with a great story along with caught-and-released trout. This Autumn romance was in the air at the base of Table Mountain. During a mini break from hiking and exploring the Park with their pup, Kyle and his long time sweetheart Ang went out to the point to take in the views across the lake. The weather cooperated offering a rare calm day, bright sun, wisps of clouds, and with Table towering in the background, he asked her to marry him. She said yes! We were delighted to be a tiny part

of helping make their day special. Even though winter came a bit late to the party, day visitors and more intrepid souls are always found out on the lake for ice fishing over New Year's and cross-country skiing and snowshoeing around the lake and on the Syncline.

With so much fun and excitement had in 2023, we're looking forward to seeing you on the lake in 2024!



Melissa Zoller, General Manager  
Email: mel@glampingresorts.com  
Join us on Facebook and Instagram:  
Glamping Resorts Ltd  
www.glampingresorts.com

# CASTLE'S BIODIVERSITY: A WILD WALK IN THE PARK

By Heather Davis



PHOTO BY JODIE KRAKOWSKI

Waterton Lakes National Park is known to have some of the highest biodiversity in Alberta, and the Castle Provincial Park has much of the same flora and high biodiversity rates. It doesn't stop at the border. When I think about the flora of the mountains I often wonder why, and my mind starts racing back to the beginning, when it all started to bloom.

This region was covered by the Laurentide Ice Sheet around 10,000 years ago. It was a barren land as the glaciers receded leaving behind bare rock, and sand and gravel deposits. When did the

vegetation move in and why? Part of the answer revolves around nunataks, which are unglaciated parts of the mountain that protrude above the glacier. These nunataks served as places where seeds and plant life survived during the glaciation. This is where plant life began. I would love to learn where the nunataks resided within the Castle region, but I do certainly see the evidence of the glaciers.

I transferred my wildflower courses to the Syncline area in the Castle Parks briefly this past summer when areas of Waterton were closed, and I was pleasantly surprised by the biodiversity. Not even 50m from the parking lot and we were nose-deep into identifying over 20 species of wildflowers. The landscape of Syncline was designed by glaciers leaving behind eskers - long windy ridges of sand and gravel deposited by streams flowing between ice walls of glaciers. Eskers provide topography and with topography we see various microhabitats, depressions, multiple

slope aspects, soil moisture gradients, open and forested areas, and a whole lot of biodiversity. Syncline was the perfect choice for a wildflower walk.

When strolling around Syncline, take in the beauty of nature and stop to really investigate the vastness of the vegetation here. Let your mind travel back a few thousand years to a landscape filled with high flowing creeks depositing material from the glacier above, and the slow but mighty process of this lifeless land becoming this now intensely abundant Castle Provincial Park. Protect these areas from invasive species (a problem in the Castle) by cleaning off your boots before going on a new trail, and don't pick the wildflowers – let others appreciate them too.

Heather Davis BSc, PAg, ACMG, HG  
 Founder & Lead Guide  
[www.upliftadventures.ca](http://www.upliftadventures.ca)  
 403.583.5884

*"The mountains are calling and I must go."* - John Muir

602 1ST AVENUE, BEAVER MINES

**MINER'S**  
MERCANTILE & BAKERY

DELI • CAFE  
BAKERY  
CONVENIENCE  
LIQUOR

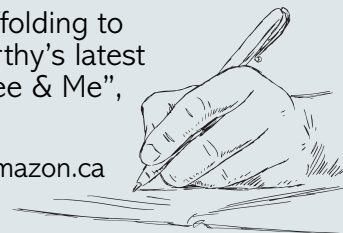
GAS & DIESEL  
WILDERNESS SUPPLY  
FIREWOOD  
PROPANE EXCHANGE

Visit [www.minersmercantile.ca](http://www.minersmercantile.ca)  
FOR SEASONAL HOURS

## CONGRATULATIONS TO OUR CASTLE AUTHORS!

Caroline Wright's "Scaffolding to the Heart", Jean McCarthy's latest book "Roberta, The Tree & Me", plus many others.

All available to buy on Amazon.ca





# THE DISCOVERY OF THE FAR NORTH: MOUNTAIN MOMENTS OF THE PAST 1966-1975

The following excerpts are from Kenworthy S (2014) *The History of West Castle to Castle Mountain Resort 1965-2007*, pages 32 & 36.

In spring, a few traverses were made as far as what is now named Sherriff but during the season it wasn't worth the effort since there was good skiing in The Larches (now known as Bandito Trees). One reason (Richard) Mamini may not have bothered with Sheriff and other areas of the cirque is a private stash of glades he was one of the first to discover and ski on a regular basis. Mamini is "pretty sure" he pioneered the path that

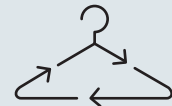
leads into the far north glades and the runs that are today known as Northern Delight, Double Exposure, Northern Exposure and North Star.

"The reason I figure I discovered it is first of all, there was never any tracks there before and there were very few people who liked to ski powder. When I did go over there I would make a track down roughly Northern Exposure they call it now. In those days it was just North Bowl, it was a big open bowl and most of those trees were covered up. They were little trees that were completely buried so it was like a big open bowl.

So I would go make a track and then go over and make another track down and then another track down. By the end of the day, there would be five tracks down there and they were all mine. It was a narrow little trail in those days, it's quite wide now. It was a narrow little trail that led you over to paradise."

**We can take your "gently used" items to the Thrift Shop in Pincher Creek.**

Last date to drop off at Lot #14 is April 4th.



**AURORA EGGERT**  
Coaching

**Meet Aurora, your Yurt Retreat Host / Yoga Teacher / Life Coach / Intimacy Coach / Emotional Intelligence Coach.**

Supporting & guiding individuals, couples and business owners to unlock their full potential when it comes to relating to themselves and the people around them.  
Nurture your Connections, ignite the Passion, embrace Love.

- Relaxation Classes at the Yurt in the forest•
- Snowshoe/Hike + Tea at the Yurt•
- Yoga/ Cool down /après ski classes•
- Coaching journeys•
- Intimacy coaching for individuals & couples•
- Yurt Retreats•

[www.auroraeggertcoaching.com](http://www.auroraeggertcoaching.com)  
[auroraeggert\\_theyurtxperience/](https://www.instagram.com/auroraeggert_theyurtxperience/)  
[auroraeggert1](https://www.facebook.com/auroraeggert1)

**Your one stop bike shop, in the Crowsnest Pass!**

**BIKE SALES!**  
- Mountain, Recreational, Kids, E-Bike! Plus all the gear and accessories!

**BIKE SERVICE!**  
-From flats to full overhauls and everything in between, with fast friendly service!

**BIKE RENTALS!**  
-Mountain bikes for jr and adult, e-bikes, and essential gear like armor and helmets!

**Alpenland**  
SKI & CYCLE

BLAIRMORE 403.753.5052 | LETHBRIDGE 403.329.6099 | [alpenland.ca](http://alpenland.ca)

**Pass Powder Keg Shop Open June to August**

**IT TAKES A VILLAGE**

What a strange year, with warm temps and no snow,  
 And it may make you think to yourself... Why go?  
 Why jump in the car towards a mountain that's lean  
 Why gyrate your knees over sastrugi's gleam  
 Why scrape off your base on bare bit of shale  
 Why traverse a flat, outpaced by a snail  
 Why indeed...

The mountain is thin, that much is true  
 But to get back to the good times... we must make it through  
 So hop in the car and head to the hill  
 As a small resort needs support from it's ville  
 And yes I'll admit, Castle's not at it's best  
 And let's be honest,  
 A grim day on the hill still outperforms the desk...

By Graham Czebere



ART BY JULIE HEINRICH

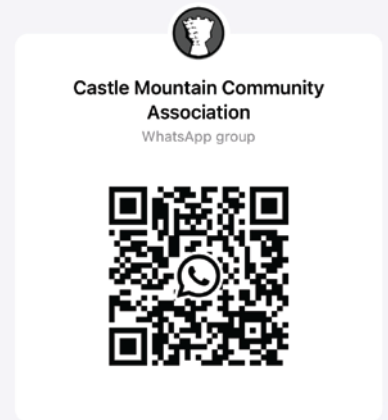
**CMCA BOARD OF DIRECTORS**

President: Tim Luke	Treasurer: Kyle Lussier	Director: Carly Hazell
Past President: Julie Heinrich	Membership: Judy Clark	Director: Chris McCue
Secretary: Kelly Furuya	Director: Kevin Finn	Director: Curtis Trim

**KEEP UP WITH CASTLE COMMUNITY HAPPENINGS...**

...similar to a Facebook group but for the cool kids.

Scan the code for more information



This group QR code is private. If it is shared with someone, they can scan it with their WhatsApp camera to join this group.

[Reset QR Code](#)

**STAY IN THE S'KNOW**

To receive a digital copy:

✉ [castlemountaincommunity@gmail.com](mailto:castlemountaincommunity@gmail.com)

Look for the next edition  
**JUNE 2024**

**Outgoing Publishing & Production Manager:**  
 Caralee Marriott

**Incoming Publishing & Production Manager:**  
 Nancy Tynan

**Editors:** Carolyn Armstrong, Cheryl DeLeuw, Michele Fraser, Karen Perry.

**Graphic Designer:** Sol Naranjo  
**Advertising:** Tim Luke



📷 📌 @castlemountaincommunity





LETHBRIDGE

- Replace old water jets •
- Replace your damaged tub cover •
- (custom or stock sizes) •

Buy your Alberta-made Hot Tub here...

WE SERVICE CASTLE MOUNTAIN RESORT REGULARLY



(403) 327 4129 | (403) 380 4745

sales@energysmartcanada.com | www.articspaslethbridge.ca

2825B 2nd Ave. (Crowsnest trail) Lethbridge, Alberta T1J 0G8

# HC FOREST PRODUCTS

## Custom Cut Timber

Doing Timber Better

403-627-6942

Cowley AB

Supplying all your timber and firewood needs



GEORGE PLONKA

"Anything worth doing is worth doing well"  
Home....(403) 564-5255 | Cell....(403) 563-7192

Appliance Service Journeyman  
Refrigeration Mechanic Journeyman  
Technologist, Design, Installation, and Service

22814-6th Ave PO Box 58, Hillcrest, Mines AB T0K1C0  
doctorcool@shaw.ca | www.doctorcool.ca

## BREWERY & TAPROOM



LUNDBRECK, ALBERTA  
403.751.0017



WWW.OLDMANRIVERBREWING.COM



Kenton Farrow, CFP®  
Certified Financial Planner®

1300 Hewetson Ave, Pincher Creek, AB T0K 1W0  
Tel: 403-627-4211 Fax: 403-627-4590

12305 20 Ave, Blairmore, AB T0K 0E0  
Tel: 403-562-2000 Fax: 403-562-7777  
kenton\_farrow@cooperators.ca



Investments. Insurance. Advice.



## Simply Cowgirl Fudge

\*Gluten Free \*Local \*Homemade

Now Available in the Castle Day  
Lodge Cafeteria!

www.simplycowgirl.com

simplycowgirlfudge@gmail.com

Order for your next Business or Special Event

Lita Richards







# T-BAR

## PUB & GRUB

Castle's T-Bar Pub is open all winter long for dine in and take out.  
For take out services, call 403-627-5101 x 305.



For all info including  
the menu, scan here.

**Hours of Operation:**  
Monday - Thursday: 3 PM - 12 AM  
Friday - Saturday: 11 AM - 2 AM  
Sunday: 11 AM - 12 AM







# CMCA Annual Membership Form

CMCA memberships are **\$20 per year, per adult**, due at the time of application/renewal. Membership is **open to all Castle residents and others with strong CMR connections**, age 18 or older. CMCA initiates and develops many projects in our community. We appreciate your membership, and your financial and volunteer support. Primary method of communication is by email. **Please email a copy/photo of your completed form, or any questions/comments, to [CastleMountainCommunity@gmail.com](mailto:CastleMountainCommunity@gmail.com), and eTransfer your fees and donations to [treasurerCMCA@gmail.com](mailto:treasurerCMCA@gmail.com) indicating in the Notes section the name of the members your payment is covering.**

**Your Name(s) & Contact Information** (Please list all adults whose fees you are paying. Use back of page as needed.)

Surname	First Name	Email Address	Cell Ph #	Home Ph #	Home Location*

*\*Eg Home Location: Castle, Pincher Creek, CNP, Lethbridge, Calgary ... Knowing members' home locations can be useful in representing CMCA to governments.*

**Your Total Annual Fees due:** \$20 x #adults listed, \_\_\_ = \$ \_\_\_\_\_ **Payment Method:** Cash \_\_\_ Cheque \_\_\_ eTransfer \_\_\_ **Mail Address** Box 884 Pincher Creek T0K1W0

**Your Connection(s) to CMCA** (check/describe all that apply)

- Have a residence at Castle\*\*** Cabin, suite or RV address: \_\_\_\_\_ Local ph# \_\_\_\_\_
- Work for Castle Mountain Resort (CMR)**
- Hold, or will hold, a current CMR season's pass** (Note: this, by itself, is a non-voting membership category)
- Other** (also, by itself, a non-voting membership category), please describe: \_\_\_\_\_

## BACKGROUND INFORMATION (Optional)

**Are you joining CMCA for the first-time** \_\_\_ **OR** **renewing your membership** \_\_\_? *If renewing, in what year did you first join CMCA?* \_\_\_\_\_ (approx.)

**Do you have family under age 18 who regularly join you at Castle?** Yes \_\_\_ No \_\_\_ *If yes, please list their ages:* \_\_\_\_\_  
*(Knowing this can help us improve planning of age-appropriate and inclusive events.)*

**In the past few years, have you:**

- Done volunteer work with CMCA? If so, THANK YOU, & please describe briefly:
- Made material donations to CMCA (eg, silent auction items)? If so, again, THANK YOU, & please describe briefly:
- Made financial donations to CMCA? If so, again, THANK YOU, & please describe briefly:

**This year, are you potentially interested in:**

- Doing some volunteer work with CMCA?
- Making some material donation(s) to CMCA?
- Making a financial donation to CMCA? (Note: You may add a donation to your current membership fee payment.)

**Thank you very much for expressing interest in any/all of these ways of support!** CMCA board members will follow-up with you.

*CMCA abides by the Alberta Personal Information Act and shall not sell, barter or lease any of its membership, donor or other lists as per sections 56(1)(iii) and 56(3) of this Act.*

<b>** Residents:</b> If CMCA should resume publishing a Residents' Directory, for distribution solely among Castle residents, would you like your information included?	
Yes ___ No ___	Signature _____ Date _____